



6 CLINICAL EVALUATORS

274 TOTAL USES

91% CLINICAL RATING

**Key features:** Wireless Intra-Oral Sensor, • High Resolution  
• Direct Conversion

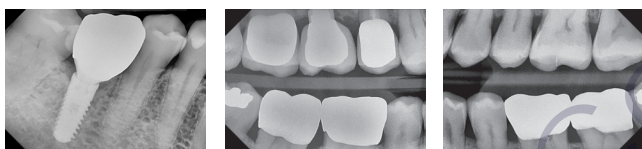
## Description

DC-Air is:

- A Wireless Intra-Oral Sensor
- Powered by Bluetooth technology
- Directly converted; it translates x-rays into an electronic signal for increased sharpness
- Constructed with direct silicon (Si) semiconductor substrate which provides durability

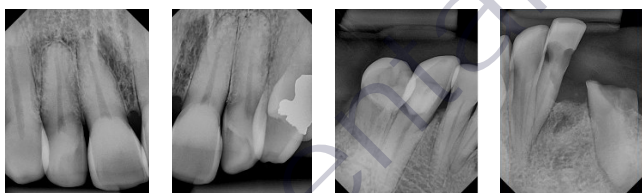
## Indication

- All intra-oral dental radiography indications, including horizontal and vertical bitewings, individual peri-apical and occlusal films



Radiograph images courtesy of Dr. John Hamerink and Bunek Dental Studio

The rounded edges of the sensor allow for easier access to capturing images of the mesial or distal aspects of the mouth.



Radiograph images courtesy of Dr. John Hamerink

The DC-Air Wireless Sensor offers an anterior holder, posterior holder, occlusal sheath, and a specialty endodontic positioning device for hard-to-get images.



## Clinical Tips

- We found that the small sleeves used for covering the bite stick on our digital pan/CBCT are perfectly sized to cover the sensor.
- Have the patient close slightly for posterior x-rays.
- Be sure to check the energy emitted; our cordless Nomad had to be increased in strength to improve the image.
- Have the patient bite down halfway and slowly for posterior PAs to get a better angle.
- You can use other brand sensor holders

“NO CORDS, GREAT QUALITY IMAGING.”

## Evaluators' Comments

“The signal for the Bluetooth is really strong!”

“The image quality is very good.”

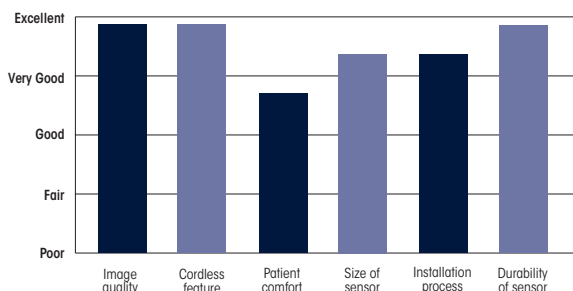
“Very durable construction.”

“Wireless just makes things easier.”

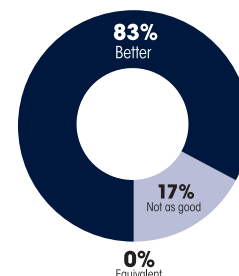
“The support we received was excellent.”

“Change the size of some of the sensor holders to accommodate different sized mouths.”

## Evaluation Summary:



## Compared to Competitive Products:



100% Consultants who would: Recommend to a colleague

67% Consultants who would want to stock in office: Yes, instead of current product